



# PIPELAYERS

RL 26 LITRONIC<sup>®</sup>



# PERFORMANCE

Maats pipelayers are designed to provide maximum performance and handle the most difficult jobs. High lifting forces, outstanding manoeuvrability and heavy-duty components in the travel and working hydraulics ensure peak performance when laying pipelines.

## POWERFUL AND STEPLESS TRAVEL DRIVE

In combination with the innovative hydrostatic travel drive, the powerful diesel engine provides maximum power in every situation. Whether transporting pipe on soft soil, lowering the pipeline when travelling uphill, or when pulling heavy pipe-bending machines - the hydrostatic travel drive reliably provides the required power.

## STEPLESS AND PRECISE CONTROL OF THE TRAVEL SPEED

The travel drive makes it possible to travel without jerky movements and extremely precisely without shifting gears. This reduces vibrations when transporting pipe and provides essentially millimetre-accurate joining during pre-assembly.

## POWER FOR TRAVELLING ON SLOPES

The hydrostatic travel drive allows the operator to manoeuvre the machine easily and with the maximum precision even on steep slopes. The safety brake (parking break) opens and closes automatically - it's impossible for the machine to roll away on the slope.

## HIGH STABILITY

The compact arrangement of the drive components results in an extremely low centre of gravity for the machine. Through use of the extra long undercarriage, Liebherr pipelayers offer maximum stability, especially on inclines.

## HIGH LIFTING CAPACITIES

Thanks to the favourable weight distribution / centre of gravity, the extended position of the counterweight and the extra long undercarriage, maximum lifting capacities are available over the entire working range.



**MAATS PIPELAYERS  
WILL IMPRESS YOU WITH  
THEIR OUTSTANDING  
PERFORMANCE  
CAPABILITIES.**







## HIGHLIGHTS PERFORMANCE

---

POWERFUL AND STEPLESS TRAVEL DRIVE

---

HIGH STABILITY

---

HIGH LIFTING CAPACITIES

---

LATEST TECHNOLOGY

---

EXCELLENT MANOEUVRABILITY

---

EXTRA LONG UNDERCARRIAGE

---

LONG BOOM



# BASE MACHINE

RL 26



## ENGINE

RL 26

Liebherr Diesel engine	D 924 A7 Emission regulations according to 97/68/EC, 2004/26/EC Stage IV, EPA/CARB Tier 4f
Rated power (ISO9249)	93 kW / 126 HP (net)
Rated power (SAE J1349)	93 kW / 125 HP (net)
Max. power (ISO9249)	107 kW / 146 HP (net)
Max. power (SAE J1349)	107 kW / 144 HP (net)
Rated speed	2,100 rpm
Displacement	4,5 l / 275 cu. In.
Design	4-cylinder-in-line engine, water cooled, turbocharged, air-to-air intercooler
Injection system	Direct fuel injection, Common Rail, electronic control
Lubrication	Pressurised lube system, engine lubrication guaranteed for inclinations up to 35 degrees, on all sides
Operating voltage	24 V
Alternator	140 A
Starter	5,5 kW / 7 HP
Batteries	2 x 100 Ah / 12V
Air cleaner	Dry-type air cleaner with pre-cleaner, main and safety elements, control light in the operator's cab
Cooling system	Combi radiator, comprising radiators for water, hydraulic fluid and charge air. Hydrostatic fan drive



## REFILL CAPACITIES

RL 26

Fuel tank	320 l/84,5 gal / 70.4 Imp.gal
Diesel Exhaust Fluid (DEF) tank	50 l/13.2 gal / 11 Imp.gal
Cooling system	24 l/6.3 gal / 5.3 Imp.gal
Engine oil with filters	19 l/5 gal / 4.2 Imp.gal
Hydraulic tank	101 l/26.7 gal / 22.2 Imp.gal
Final drive XL, LGP, each side	7,5 l/2 gal / 1.6 Imp.gal



## OPERATOR'S CAB

RL 26

Cab	Resiliently mounted cab with positive pressure ventilation, can be tilted with hand pump 40° to the rear. With integrated ROPS Rollover Protective Structure (EN ISO 3471) and FOPS Falling Objects Protective Structure (EN ISO 3449)
Operator's seat	Air-suspended comfort seat, fully adjustable
Monitoring	Touch screen: display of current machine information, automatic monitoring of operating conditions. Individual setting of machine parameters



## TRAVEL DRIVE, CONTROL

RL 26

Transmission system	Infinitely variable hydrostatic travel drive, independent drive for each track
Travel speed*	Continuously variable
- Speed range 1 (reverse)	0 - 4,0 km/h / 2.5 mph (4,5 km/h / 2.8 mph)
- Speed range 2 (reverse)	0 - 8,0 km/h / 3.7 mph (8,0 km/h / 4.9 mph)
- Speed range 3 (reverse)	0 - 10,0 km/h / 6.2 mph (10,0 km/h / 6.2 mph)
	* Travel speed ranges can be set on the travel joystick (memory function)
Electronic control	The electronic system automatically adjusts travel speed and drawbar pull to match changing load conditions.
Steering	Hydrostatic
Service brake	Hydrostatic (self-locking), wear free
Parking brake	Multi-disk brake, wear free, automatically applied with neutral joystick position
Cooling system	Hydraulic oil cooler integrated in combi radiator, hydrostatic fan drive
Filter system	Micro cartridge filters in replenishing circuit
Final drive	Combination spur gear with planetary gear
Control	Single joystick for all travel and steering functions, Optional detented Joystick, with inching pedal



## HYDRAULIC WINCH

RL 26

Hoist winch	Variable flow hydraulic pump
Safety brake	Spring-loaded disc brake holds the load safely in any position
Drum diameter	248 mm / 9.75"
Drum length	349 mm / 13.75"
Flange diameter	416 mm / 16.38"
Cable diameter	16 mm / 0.63"
Cable length	55 m / 60.15 yd
Hook block	2 sheaves - 4 strand
Hook speed (up, down)	0-33 m/min 0-108 ft/min



## UNDERCARRIAGE

RL 26

Design	Undercarriage with rigid bottom rollers
Mount	Via separate pivot shafts and equalizer bar
Tracking chains	Lubricated, single grouser shoes; tensioning via separate pivot shafts and a fixed equaliser bar
Links, each side	47
Track rollers, each side	10
Carrier rollers, each side	2 (2")
Sprocket segments, each side	5
Track shoes standard	762 mm / 30"



## HYDRAULIC SYSTEM

RL 26

Hydraulic system	Loadensing (demand controlled)
Pump type	Swash plate piston pump
Pump flow max.	155 l/min 34.1 gpm
Pressure limitation	315 bar / 4,568 PSI
Control valve	3 segments, expandable to 7
Filter system	Return filter with magnetic rod in the hydraulic tank
Control	Single joystick for hoist winch and adjustable boom cylinder, free all device of hook in case of danger. Further single joystick for counterweight.

# BASE MACHINE

RL 26



## DRAWBAR PULL

RL 26

Max.	215 kN
at 1,5 km/h / 0.9 mph	190 kN
at 3,0 km/h / 1.9 mph	96 kN
at 5,0 km/h / 3.7 mph	49 kN
at 9,0 km/h / 5.6 mph	32 kN

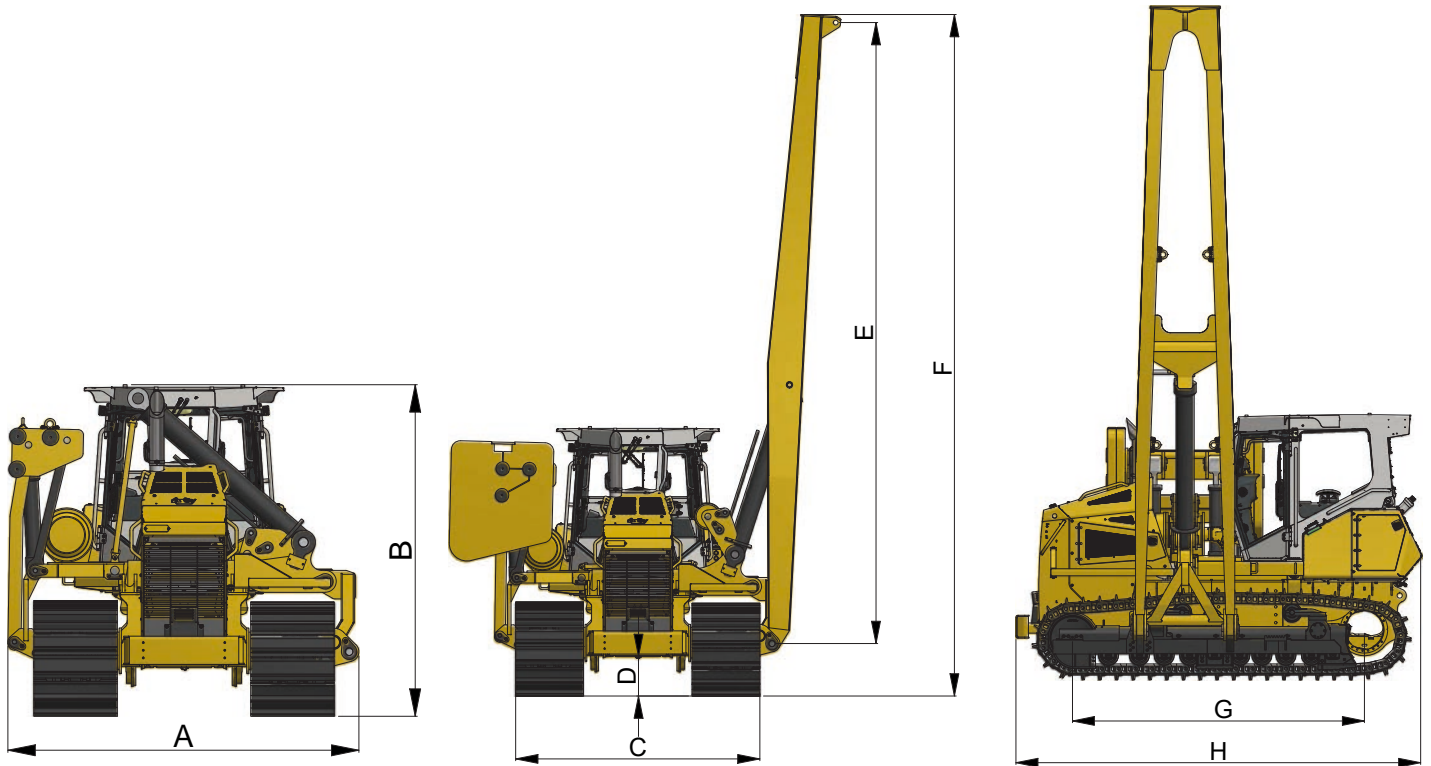


## SOUND LEVELS

RL 26

Operator sound exposure (ISO 6396)	$L_{PA}$ (in the cab) = 75 dB(A)
Exterior sound pressure (2000/14/EC)	$L_{WA}$ (to the environment) = 109 dB(A)

## DIMENSIONS RL 26



## DIMENSIONS

RL 26

A	Overall width	mm/ft-in	3200 / 10'5"
B	Total height	mm/ft-in	3027 / 9'11"
C	Total width over undercarriage	mm/ft-in	2742 / 8'11"
D	Ground clearance	mm/ft-in	444 / 1'5"
E	Boom length	mm/ft-in	6972 / 22'10"
F	Total height	mm/ft-in	7652 / 25'1"
G	Distance idler/sprocket center	mm/ft-in	3317 / 10'10"
H	Overall length	mm/ft-in	4614 / 15'1"

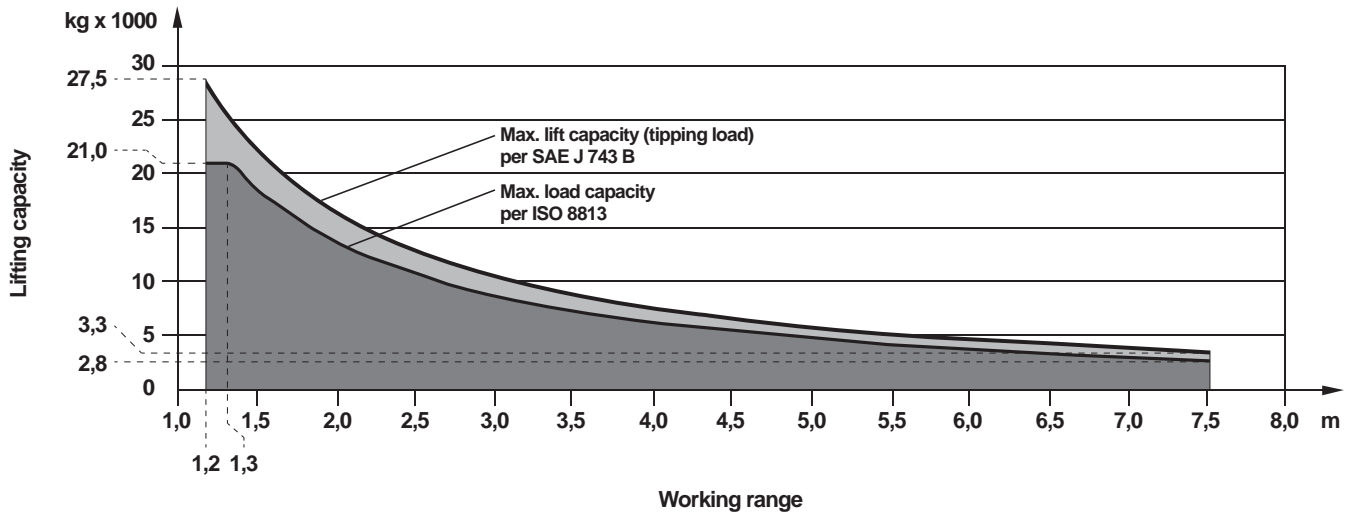


## WEIGHTS

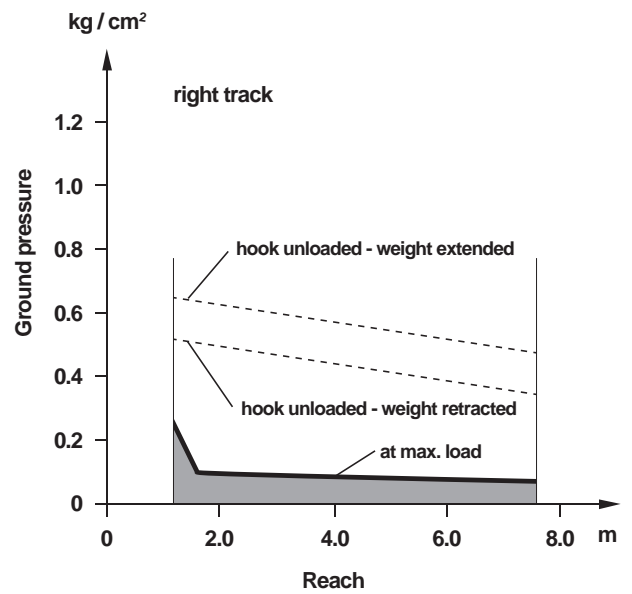
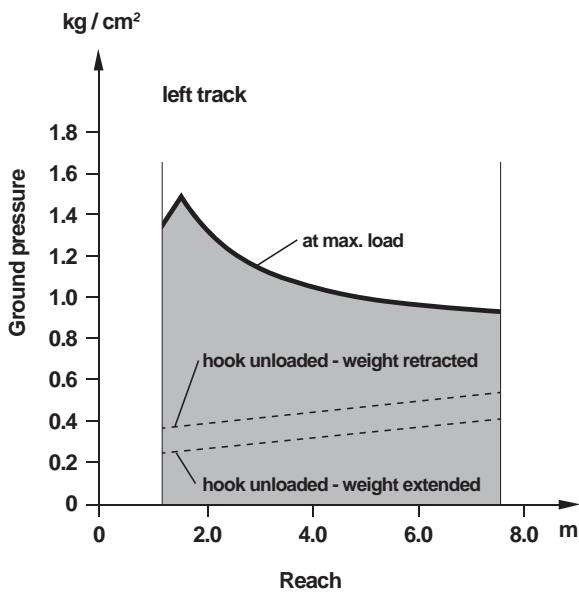
RL 26

Operating weight	23.300 kg
Ground pressure (Track shoes 762 mm - 30" )	0,46 kg/cm <sup>2</sup>

# LIFT CAPACITY RL 26 (ISO 8813)



# GROUND PRESSURE RL 26 (ISO 8813)





# EQUIPMENT

RL 26



## BASE MACHINE

Additional handle on fuel tank	+
Air filter, dry type, dual step, with pre-filter	•
Auto idle	+
Automatic engine shut-off	+
Battery compartment, lockable	•
Coal arrangement	1)
Cold environment arrangement	1)
Cooling fan, hinged (with tool)	•
Cooling fan, hydraulically driven	•
Cooling fan, reversible	+
Diesel Exhaust Fluid (DEF) tank, lockable	•
Diesel particulate filter	1)
Engine compartment doors, lockable	•
Forestry arrangement	1)
Fuel pre-filter	•
Fuel pre-filter, with electric heater	+
Fuel water separator	•
Grade control ready kit	+
Hydraulic oil level control	+
LIDAT - Data transmission system	•
Liebherr diesel engine emission stage IV/Tier 4f	•
Liebherr hydraulic oil, biologically degradable	+
Lugs for crane lifting, front	•
Radiator guard, hinged (with tool)	•
Radiator, wide-meshed	•
Refuelling pump, electric	+
Spade with mounting bracket	+
Special paint scheme	+
Tool kit, extended	+
Towing hitch rear	•



## OPERATOR'S CAB

Air-conditioner	•
Armrests 3D adjustable	•
Cab heating	•
Coat hook	•
Dome light	•
Dust filter system pressurised	+
Fire extinguisher in the cab	+
Footrest on the right side of the front console	+
Grab handles at joysticks	+
Operator's seat Comfort, air-suspended	•
Operator's seat Premium, air-suspended	+
Pressurised cab	•
Protective grid, rear window	+
Radio	+
Radio preparation kit	+
Rear-mounted mirror	+
Rear-view camera	+
Rear-view mirror, inside	•
Rear-view mirrors, external	+
ROPS/FOPS integrated	•
Safety glass tinted	•
Sliding window left	+
Sliding window right	+
Socket 12 V	•
Storage nets	+
Stowage compartment, air-conditioned	•
Sunblind, front	+
Touch-controlled color display	•
Windshield washer system	•
Windshield wipers front, rear, doors, with intermittent function	•



## UNDERCARRIAGE

Master link, two-piece	•
Sprocket segments with recesses	1)
Sprocket segments, bolted	•
Track guard, full length	+
Track guide, centre part	•
Track guide, front and rear	•
Track pads with mud holes 2)	+
Track shoes, moderate service	•
Tracks, oil-lubricated	•
Undercarriage LGP	•
Undercarriage with rotary bushings FTB 2)	+



## ATTACHMENTS

Boom 7 m	•
Boom protection strips	+
Hook with rope	•
Boom extension (Jib) 2700 mm 1000 kg	+
Extendable counterweight	•
Certification specific countries	+
Arctic kit for -40°	+



## TRAVEL DRIVE

Emergency stop	•
Final drives planetary gear	•
Inch brake pedal	+
Load limit control, electronic	•
Parking brake, automatic	•
Seat contract switch	•
Travel control, 3 speed ranges	•
Travel drive joystick, detended	+
Travel drive joystick, proportional	•
Travel drive, hydrostatic	•



## ELECTRICAL SYSTEM

2 additional working lights on the cab, rear	+
2 cold start batteries	•
2 working lights on the cab, rear	•
4 working lights on the cab, front	•
All working lights in LED version	+
Amber beacon	+
Back-up alarm	+
Back-up alarm, acoustic and visual	+
Back-up alarm, switchable	+
Battery main switch	•
Battery main switch, lockable	+
Horn	•
Immobiliser, electronic	+
On-board voltage 24 V	•



## HYDRAULIC SYSTEM

Hydraulic control counterweight	•
Hydraulic control winch and boom	•
Variable flow pump, load sensing	•
Oil filter with strainer in hydraulic tank	•
Free fall device	•
Hydraulic servo control	•
Control valve for 1 circuit	+
Hydraulic tank oil level control	+
Hydraulic PTO for powering external equipment (pipe facing machine)	•



## ATTACHMENTS REAR

Counterweight, rear (1,000 kg / 2,205 lb)	+
Drawbar rear, rigid	+
Mounting plate for third-party equipment	+
Rear winch	+
Weld deck	+

• = standard  
+ = option

1) = On demand at your dealer

2) = Available track shoes on demand at your dealer

Options and/or special attachments, supplied by vendors other than Liebherr, are only to be installed with the knowledge and approval of Liebherr to retain warranty.



# MAATS PIPELINE PROFESSIONALS

Maats manufactures, sells and rents out high quality equipment for the construction of pipelines with all common diameters from 6 up to 60 inches. With branch offices in Indonesia (PT. Maats), partnerships in Algeria (Maats Afrique) and Turkey (Maats Insaat) and a close cooperation with the global network of Liebherr companies, Maats' presence is truly global.

## THE NETHERLANDS HEAD OFFICE

Breukersweg 4  
7471 ST Goor  
the Netherlands  
P.O.Box 165  
7470 AD Goor  
the Netherlands  
T: +31 (0)547 260 000  
F: +31 (0)547 261 000  
E: info@maats.com

## INDONESIA SUBSIDIARY office

Talavera Office Suite  
18th floor  
JL. T.B. Simatupang  
Kav. 22-26  
12430 Jakarta  
Indonesia  
T: +62 (0)212 971 5936  
E: info@maats.com

## INDONESIA SUBSIDIARY workshop

Kawasan Industri Sekupang Makmur  
Abadi E4 No. 1  
JL. R.E. Martadinata  
Tanjung Pinggir, Sekupang  
29428 Batam  
Indonesia  
T: +62 (0)778 326 526  
F: +62 (0)778 326 576  
E: info@maats.com



**STRENGTH,  
PERFORMANCE  
& RELIABILITY  
UNDER ALL  
CIRCUMSTANCES.  
READY FOR  
FUTURE CHALLENGES**